

B2 UNIT B: 2nd FLOOR

1/8" = 1'-0"

**COLLABORATIVE DESIGN ARCHITECTS**  
 2300 GRAND ROAD, SUITE C, BILLINGS, MT 59102  
 T. 406.248.2443 F. 406.248.9749  
 www.collaborativedesignarchitects.com

COPYRIGHT © 2014  
 THESE DOCUMENTS, IN PART OR IN WHOLE, AND THE DESIGN THEY REPRESENT ARE THE SOLE PROPERTY OF COLLABORATIVE DESIGN ARCHITECTS. NO PART OF THESE DOCUMENTS MAY BE REPRODUCED, COPIED, OR ADAPTED WITHOUT THE EXPRESS WRITTEN CONSENT OF COLLABORATIVE DESIGN ARCHITECTS. REPRODUCTION, MODIFICATION OR ADAPTATION WITHOUT THE EXPRESS WRITTEN CONSENT OF COLLABORATIVE DESIGN ARCHITECTS IS STRICTLY PROHIBITED.

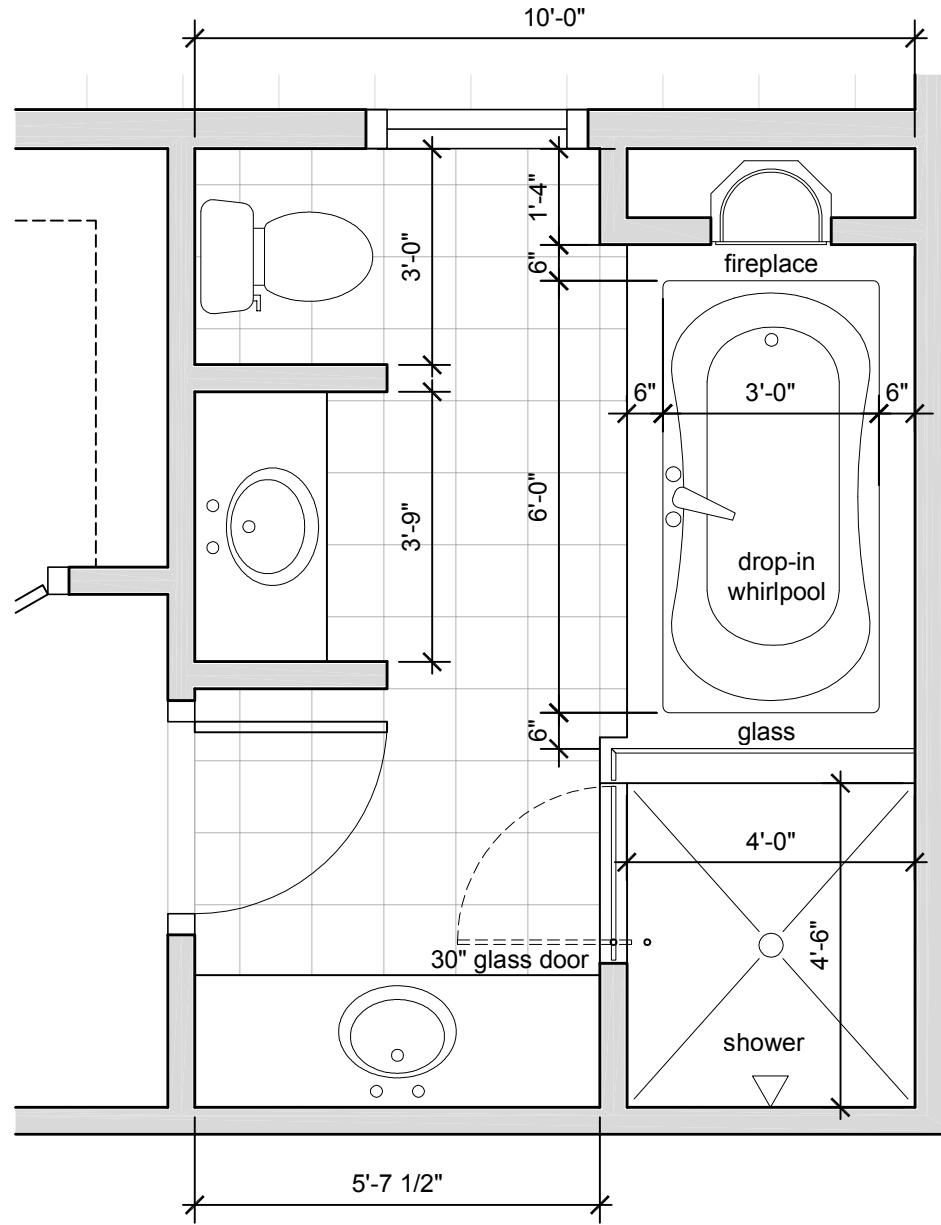
PROJECT: **Island at Rock Creek Duplex**  
 LOCATION: **Kainu Avenue Red Lodge, Montana**  
 PREPARED FOR: **Kieley Construction**

DATE: 17JAN14  
 REVISION: UNIT B  
 DRAWN BY: MASTER BATH

PROJECT NO.: 1230

DUPLEX UNIT B  
2nd FLOOR

**B2**



B3 UNIT B: MASTER BATH

3/8" = 1'-0"

PROJECT: Island at Rock Creek  
 Duplex  
 LOCATION: Kainu Avenue  
 Red Lodge, Montana  
 PREPARED FOR: Kieley Construction

DATE: 17JAN14  
 REVISION: UNIT B  
 DRAWN BY: WJH  
 PROJECT NO.: 1230  
 MASTER BATH

**COLLABORATIVE DESIGN ARCHITECTS**  
 2300 GRANT ROAD, SUITE C, BILLINGS, MT 59102 T. 406.248.2443 F. 406.248.2749  
 COPYRIGHT

COPYRIGHT © 2014  
 THESE DOCUMENTS, IN PART OR IN WHOLE, AND THE DESIGN THEY REPRESENT ARE THE SOLE PROPERTY OF COLLABORATIVE DESIGN ARCHITECTS. NO PART OF THESE DOCUMENTS, IN WHOLE OR IN PART, MAY BE REPRODUCED, COPIED, REPRODUCED, MODIFIED, OR ADAPTED WITHOUT THE EXPRESS WRITTEN CONSENT OF COLLABORATIVE DESIGN ARCHITECTS. REPRODUCTION OR ADAPTATION WITHOUT THE EXPRESS WRITTEN CONSENT OF COLLABORATIVE DESIGN ARCHITECTS IS STRICTLY PROHIBITED.

DUPLEX UNIT B  
 2nd FLOOR

**B3**