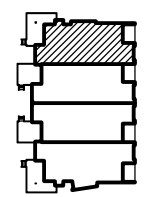


A UNIT D: GROUND FLOOR
 1/8" = 1'-0"

KEY PLAN:



DECK/PORCH AREA:

UNIT D	SF
GF	430
2F	200
TOTAL:	630

UNIT DESCRIPTION:

BEDROOMS:	3
BATHS:	3 FULL
GARAGE:	1-CAR
CREEK-SIDE DECKS:	3
GAS FIREPLACES:	2

AREA:

UNIT D	SF
GF	1,262
2F	955
TOTAL LIVING:	2,217
GARAGE	351
GROSS:	2,568

**COLLABORATIVE
 DESIGN
 ARCHITECTS** ONI

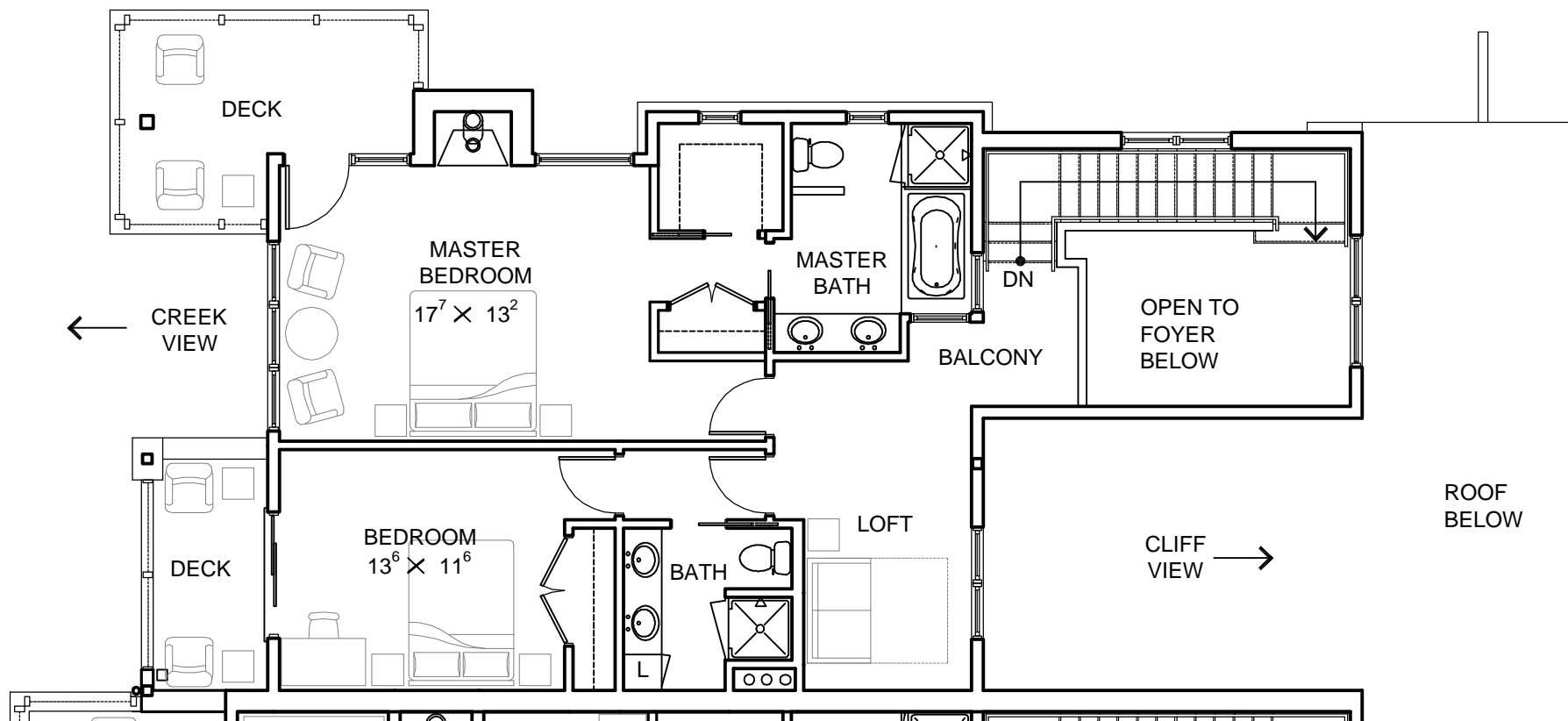
PROJECT: The Aspens at Rock Creek
 LOCATION: 13th Street & Kainu Avenue
 Red Lodge, Montana
 PREPARED FOR: Kiely Construction

DATE: 15SEP05 REVISION: REVISED UNITS

DRAWN BY: _____
 CHECKED BY: WJH
 JC
 PROJECT NO. 0427

UNIT D
 GROUND FLOOR
 PLAN

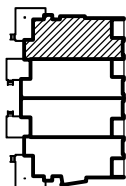
2280 GRANT ROAD SUITE C • PO BOX 80467 • BILLINGS, MT. 59108-0467
 (406) 248-3443 • FAX (406) 248-3765 • COLLABORATIVE @USADIG.COM



A UNIT D: SECOND FLOOR

1/8" = 1'-0"

KEY PLAN:



COLLABORATIVE
 DESIGN
 ARCHITECTS

2280 GRANT ROAD SUITE C • PO BOX 80467 • BILLINGS, MT. 59108-0467
 (406) 248-3443 • FAX (406) 248-3765 • COLLABORATIVE @USADIG.COM

PROJECT: The Aspens at Rock Creek

LOCATION: 13th Street & Kainu Avenue
 Red Lodge, Montana

PREPARED FOR: Kiely Construction

DATE	REVISION
15SEP05	REVISED UNITS

DRAWN BY: _____
 WJH
 CHECKED BY: _____
 JC
 PROJECT NO. _____
 0427

UNIT D
 SECOND FLOOR
 PLAN

PROJECT: The Aspens at Rock Creek
LOCATION: 13th Street & Kainu Avenue
 Red Lodge, Montana
PREPARED FOR: Kieley Construction

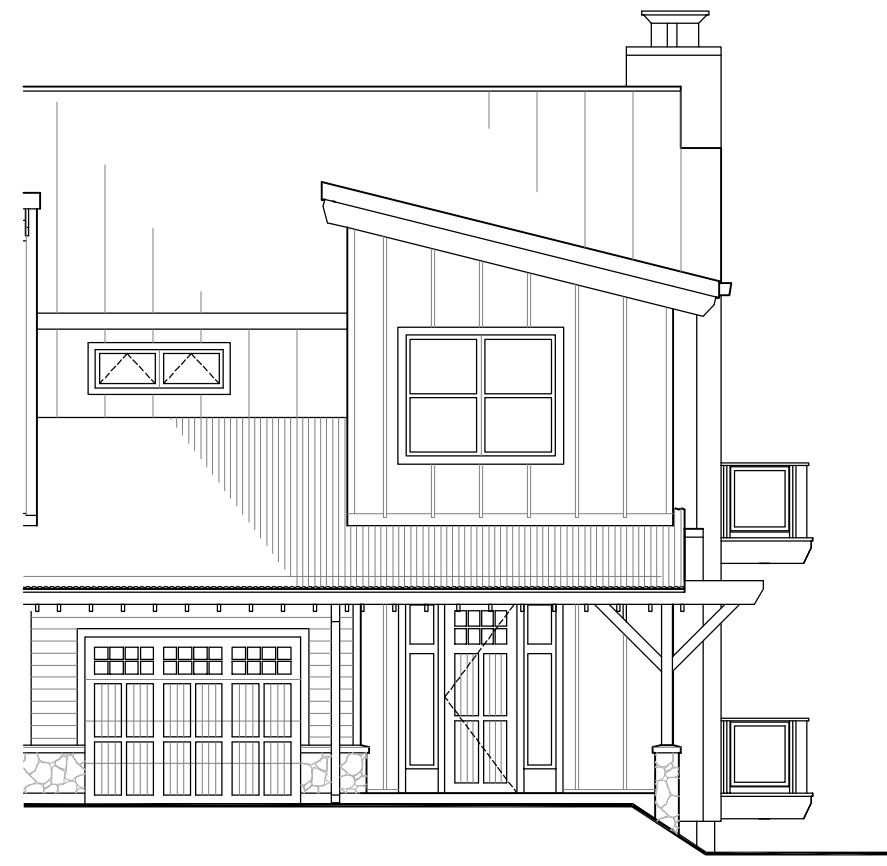
DATE	REVISION
15SEP05	REVISED UNITS

DRAWN BY: _____
WJH
CHECKED BY: _____
JC
PROJECT NO. _____
0427

UNIT D
 EXTERIOR
 ELEVATIONS



A CREEK ELEVATION
 1/8" = 1'-0"



B CLIFF ELEVATION
 1/8" = 1'-0"



A END ELEVATION

1/8" = 1'-0"

PROJECT: The Aspens at Rock Creek

LOCATION: 13th Street & Kainu Avenue
 Red Lodge, Montana

PREPARED FOR: Kiely Construction

DATE	REVISION
15SEP05	REVISED UNITS

DRAWN BY: _____
WJH
CHECKED BY: _____
JC
PROJECT NO. _____
0427

UNIT D
 EXTERIOR
 ELEVATIONS