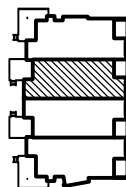


A UNIT C: SECOND FLOOR

1/8" = 1'-0"

KEY PLAN



**COLLABORATIVE
 DESIGN
 ARCHITECTS** ONI

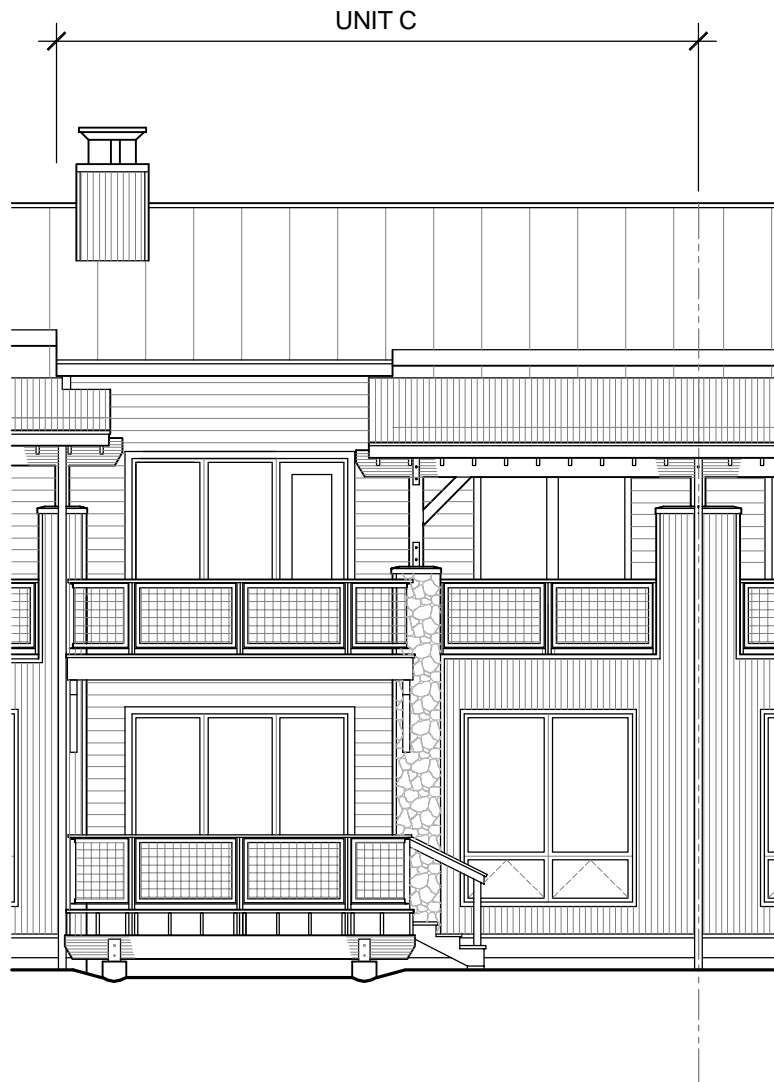
2280 GRANT ROAD SUITE C • PO BOX 80467 • BILLINGS, MT. 59108-0467
 (406) 248-3443 • FAX (406) 248-3765 • COLLABORATIVE @USADIG.COM

PROJECT: **The Aspens at Rock Creek**
 LOCATION: 13th Street & Kainu Avenue
 Red Lodge, Montana
 PREPARED FOR: Kiely Construction

DATE	REVISION
15SEP05	REVISED UNITS

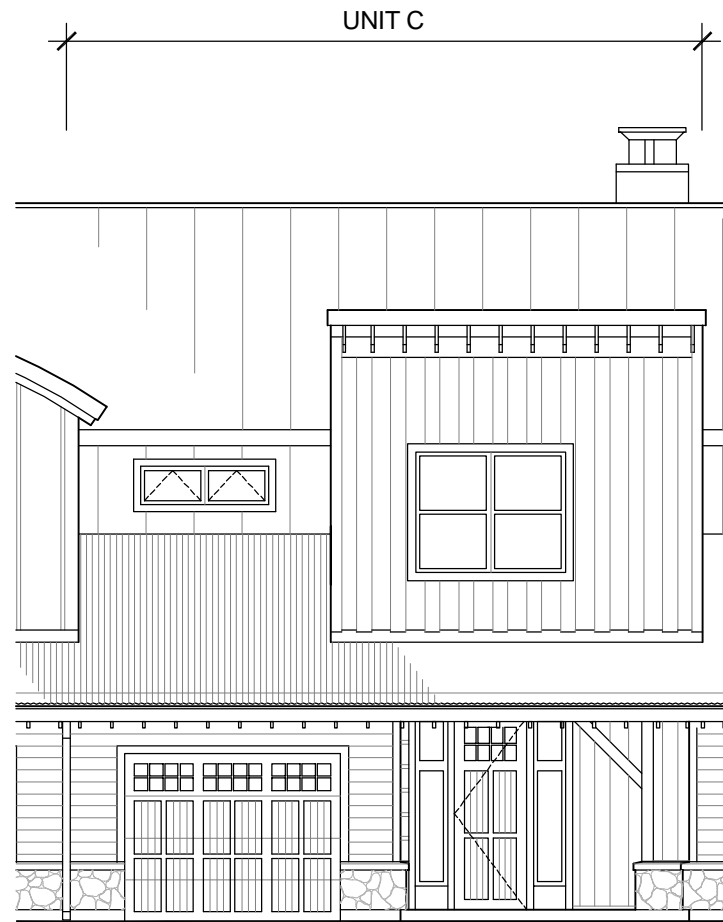
DRAWN BY: _____
 CHECKED BY: WJH
 JC
 PROJECT NO. 0427

**UNIT C
 SECOND FLOOR
 PLAN**



A CREEK ELEVATION

1/8" = 1'-0"



B CLIFF ELEVATION

1/8" = 1'-0"

COPYRIGHT © 2005
 THESE DOCUMENTS, IN PART OR IN WHOLE, AND
 THE DESIGN THEY REPRESENT, ARE THE SOLE
 PROPERTY OF COLLABORATIVE DESIGN
 ARCHITECTS. THESE DOCUMENTS ARE INTENDED
 FOR THE PROJECT OR THE SITE INDICATED. ANY
 USE, REPRODUCTION, MODIFICATION OR
 ADAPTATION WITHOUT THE EXPRESS WRITTEN
 CONSENT OF COLLABORATIVE DESIGN
 ARCHITECTS IS STRICTLY PROHIBITED.

**COLLABORATIVE
 DESIGN
 ARCHITECTS** ONI

2280 GRANT ROAD • SUITE C • PO BOX 80467 • BILLINGS, MT. 59108-0467
 (406) 248-3443 • FAX (406) 248-3765 • COLLABORATIVE @USADIG.COM

PROJECT:
 The Aspens at Rock Creek

LOCATION:
 13th Street & Kainu Avenue
 Red Lodge, Montana

PREPARED FOR:
 Kiely Construction

DATE	REVISION
15SEP05	REVISED UNITS

DRAWN BY: _____
WJH
CHECKED BY: _____
JC
PROJECT NO. _____
0427

**UNIT C
 EXTERIOR
 ELEVATIONS**

C-3