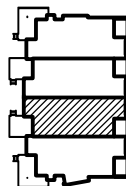


A UNIT B: GROUND FLOOR

1/8" = 1'-0"

KEY PLAN



DECK/PORCH AREA:

UNIT B	SF
GF	327
2F	219
<b>TOTAL:</b>	<b>546</b>

UNIT DESCRIPTION:

<u>BEDROOMS:</u>	3
<u>BATHS:</u>	3 FULL
<u>GARAGE:</u>	1-CAR
<u>CREEK-SIDE DECKS:</u>	3
<u>GAS FIREPLACES:</u>	2

AREA:

<u>UNIT B</u>	<u>SF</u>
GF	1,246
2F	1,226
<b>TOTAL LIVING:</b>	<b>2,472</b>
<u>GARAGE</u>	<u>349</u>
<b>GROSS:</b>	<b>2,821</b>

PROJECT: The Aspens at Rock Creek

LOCATION: 13th Street & Kainu Avenue  
 Red Lodge, Montana

PREPARED FOR: Kiely Construction

DATE

15SEP05

REVISION

REVISED UNITS

DRAWN BY:

WJH

CHECKED BY:

JC

PROJECT NO.

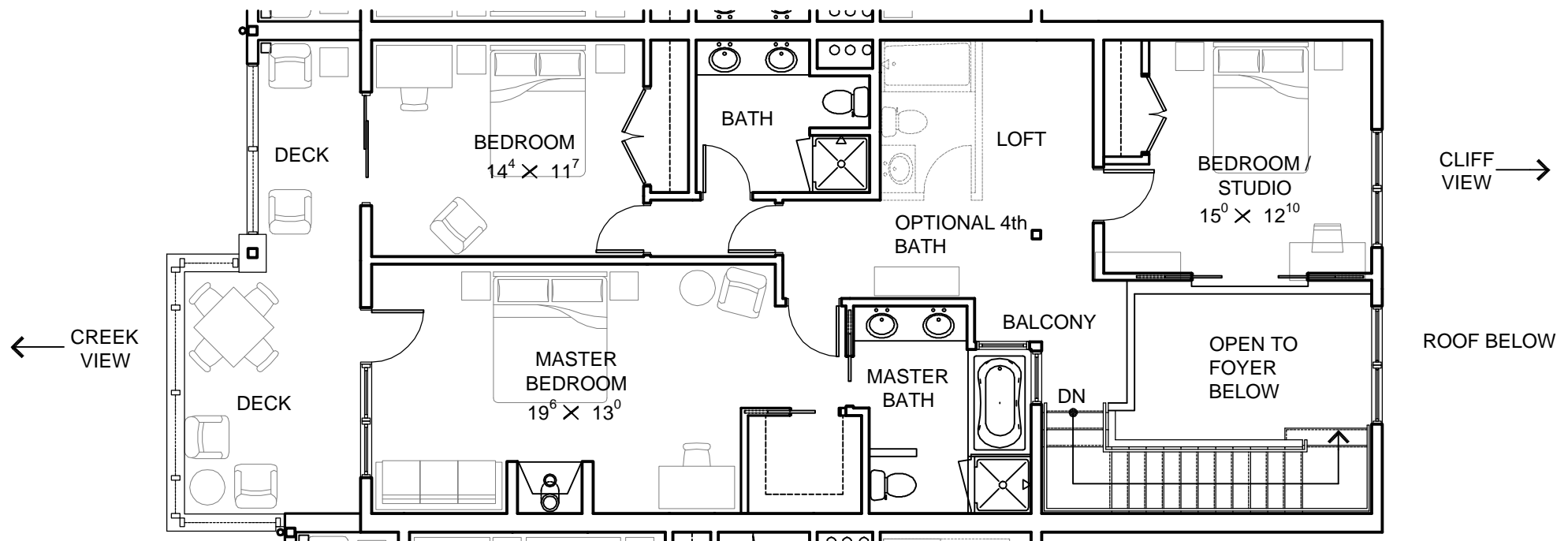
0427

**UNIT B  
 GROUND FLOOR  
 PLAN**

**B-1**

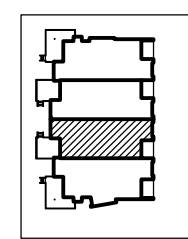
**COLLABORATIVE  
 DESIGN  
 ARCHITECTS**

2280 GRANT ROAD SUITE C • PO BOX 80487 • BILLINGS, MT. 59108-0487  
 (406) 248-3443 • FAX (406) 248-3765 • COLLABORATIVE @USADIG.COM



A UNIT B: SECOND FLOOR  
 1/8" = 1'-0"

KEY PLAN



**COLLABORATIVE  
 DESIGN  
 ARCHITECTS** ONI

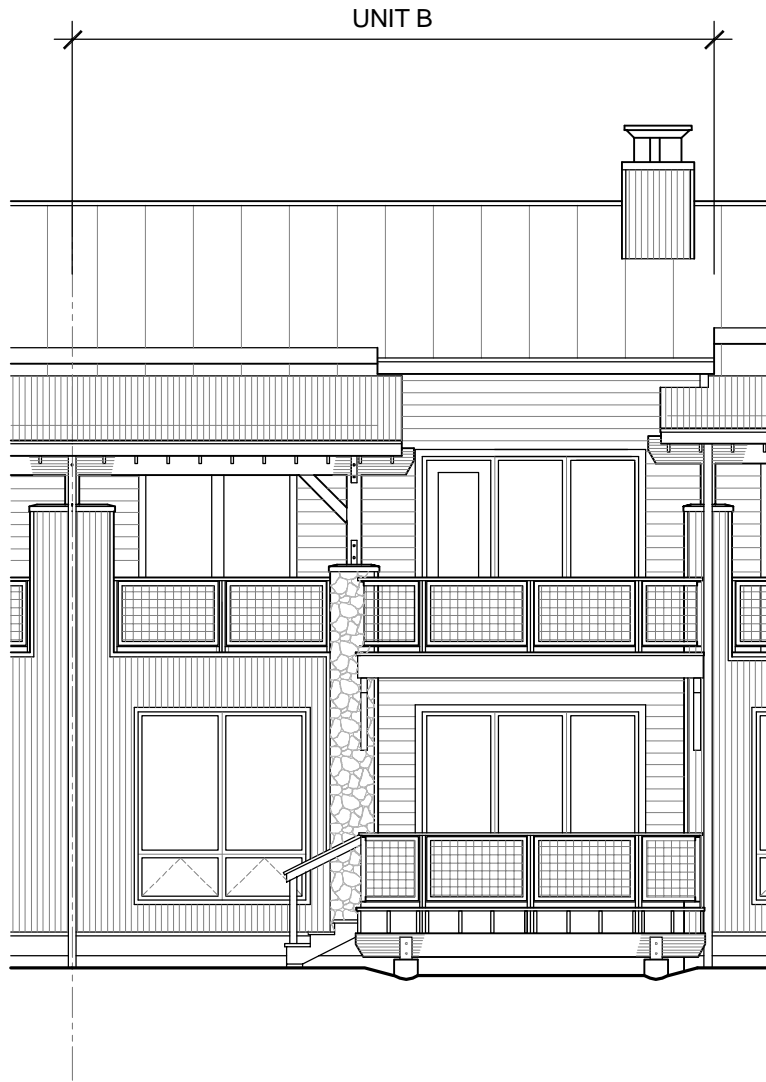
2280 GRANT ROAD SUITE C • PO BOX 80487 • BILLINGS, MT. 59108-0487  
 (406) 248-3443 • FAX (406) 248-3765 • COLLABORATIVE @USADIG.COM

PROJECT: **The Aspens at Rock Creek**  
 LOCATION: 13th Street & Kainu Avenue  
 Red Lodge, Montana  
 PREPARED FOR: Kiely Construction

DATE	REVISION
15SEP05	REVISED UNITS

DRAWN BY: \_\_\_\_\_  
 WJH  
 CHECKED BY: \_\_\_\_\_  
 JC  
 PROJECT NO. \_\_\_\_\_  
 0427

**UNIT B  
 SECOND FLOOR  
 PLAN**



**A CREEK ELEVATION**

1/8" = 1'-0"



**B CLIFF ELEVATION**

1/8" = 1'-0"

COPYRIGHT © 2005  
 THESE DOCUMENTS, IN PART OR IN WHOLE, AND  
 THE DESIGN THEY REPRESENT, ARE THE SOLE  
 PROPERTY OF COLLABORATIVE DESIGN  
 ARCHITECTS. THESE DOCUMENTS ARE INTENDED  
 FOR THE PROJECT OR THE SITE INDICATED. ANY  
 USE, REPRODUCTION, MODIFICATION OR  
 ADAPTATION WITHOUT THE EXPRESS WRITTEN  
 CONSENT OF COLLABORATIVE DESIGN  
 ARCHITECTS IS STRICTLY PROHIBITED.

**COLLABORATIVE  
 DESIGN  
 ARCHITECTS** ONI

2280 GRANT ROAD • SUITE C • PO BOX 80467 • BILLINGS, MT. 59108-0467  
 (406) 248-3443 • FAX (406) 248-3765 • COLLABORATIVE @USADIG.COM

**PROJECT:**  
 The Aspens at Rock Creek

**LOCATION:**  
 13th Street & Kainu Avenue  
 Red Lodge, Montana

**PREPARED FOR:**  
 Kiely Construction

DATE	REVISION
15SEP05	REVISED UNITS

**DRAWN BY:** \_\_\_\_\_  
**WJH**  
**CHECKED BY:** \_\_\_\_\_  
**JC**  
**PROJECT NO.** \_\_\_\_\_  
**0427**

**UNIT B  
 EXTERIOR  
 ELEVATIONS**

**B-3**