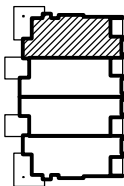


A UNIT D: GROUND FLOOR

1/8" = 1'-0"

KEY PLAN:



DECK/PORCH AREA:

UNIT D	SF
Ground Floor	417
Second Floor	200
Total:	617

UNIT DESCRIPTION:

BEDROOMS:	3
BATHS:	3 FULL
GARAGE:	1-CAR
CREEK-SIDE DECKS:	3
GAS FIREPLACES:	2

AREA:

UNIT D	SF
Ground Floor	1,253
Second Floor	955
Total Living Area:	2,208
Garage	351
Gross Area:	2,559

PROJECT: The Island at Rock Creek

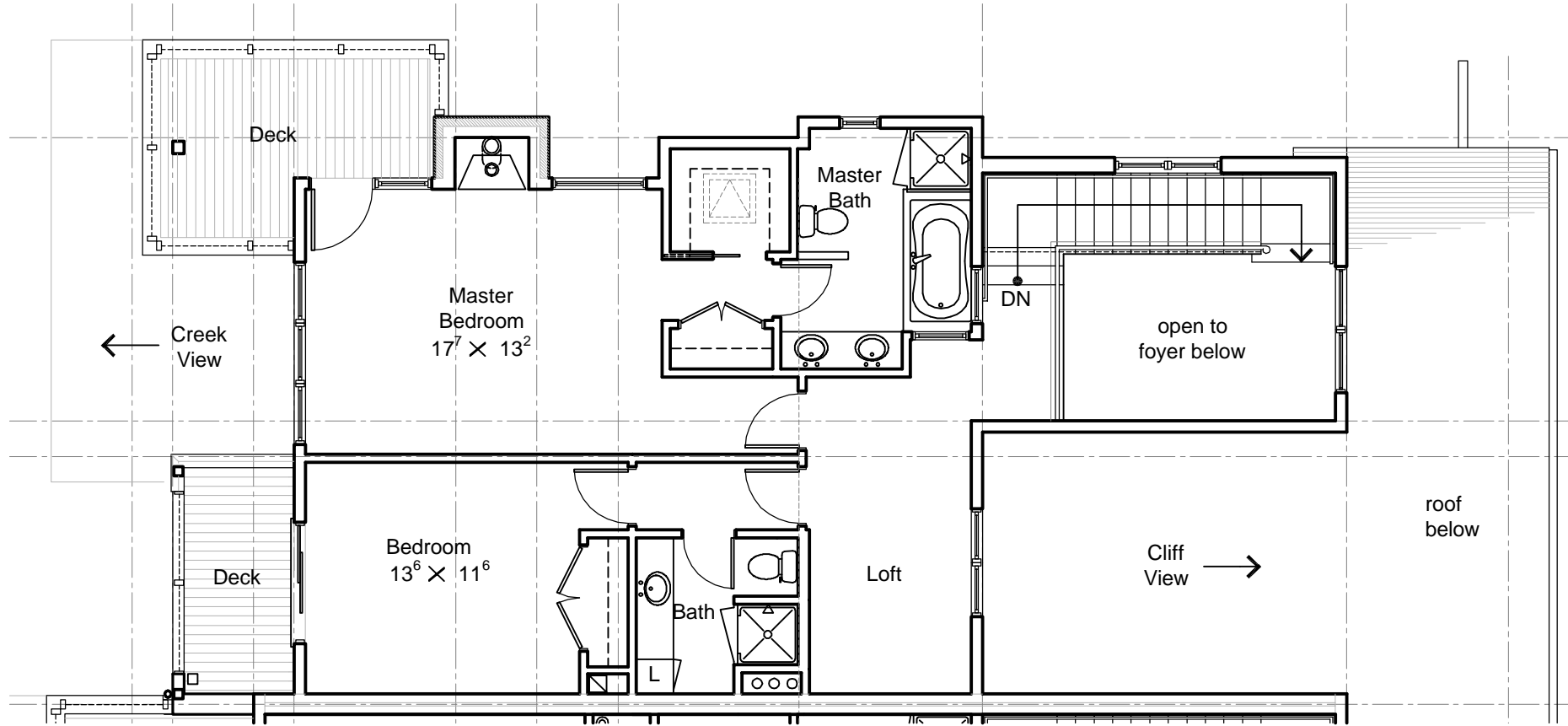
LOCATION: Phase 1 - Building 3
 Kainu Avenue, Red Lodge, Montana

PREPARED FOR: Kieley Construction

DATE	REVISION
26JUN06	PDF BROCHURE

DRAWN BY:	
WJH	
CHECKED BY:	
JC	
PROJECT NO:	
0427	

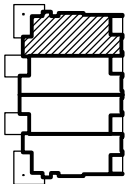
UNIT D
 GROUND FLOOR
 PLAN



A UNIT D: SECOND FLOOR

1/8" = 1'-0"

KEY PLAN:



COLLABORATIVE
 DESIGN
 ARCHITECTS INC.

2280 GRANT ROAD SUITE C • PO BOX 80467 • BILLINGS, MT. 59108-0467
 (406) 248-3443 • FAX (406) 248-3765 • COLLABORATIVE @USADIG.COM

PROJECT: The Island at Rock Creek

LOCATION: Phase 1 - Building 3
 Kainu Avenue, Red Lodge, Montana

PREPARED FOR: Kieley Construction

DATE	REVISION
26JUN06	PDF BROCHURE

DRAWN BY: _____
 CHECKED BY: WJH
 JC
 PROJECT NO. 0427

UNIT D
 SECOND FLOOR
 PLAN

COPYRIGHT © 2006
 THESE DOCUMENTS, IN PART OR IN WHOLE, AND
 THE DESIGN THEY REPRESENT, ARE THE SOLE
 PROPERTY OF COLLABORATIVE DESIGN
 ARCHITECTS. THESE DOCUMENTS ARE INTENDED
 FOR THE PROJECT ON THE SITE INDICATED. ANY
 USE, REPRODUCTION, MODIFICATION OR
 ADAPTATION WITHOUT THE EXPRESS WRITTEN
 CONSENT OF COLLABORATIVE DESIGN
 ARCHITECTS IS STRICTLY PROHIBITED.

**COLLABORATIVE
 DESIGN
 ARCHITECTS** ON

2280 GRANT ROAD SUITE C • PO BOX 80467 • BILLINGS, MT. 59108-0467
 (406) 248-3443 • FAX (406) 248-3765 • COLLABORATIVE @USADIG.COM

PROJECT: **The Island at Rock Creek**

LOCATION: Phase 1 - Building 3
 Kainu Avenue, Red Lodge, Montana

PREPARED FOR:
 Kieley Construction

DATE	REVISION
26JUN06	PDF BROCHURE

DRAWN BY: _____
 CHECKED BY: _____
 JC
 PROJECT NO. _____
 0427

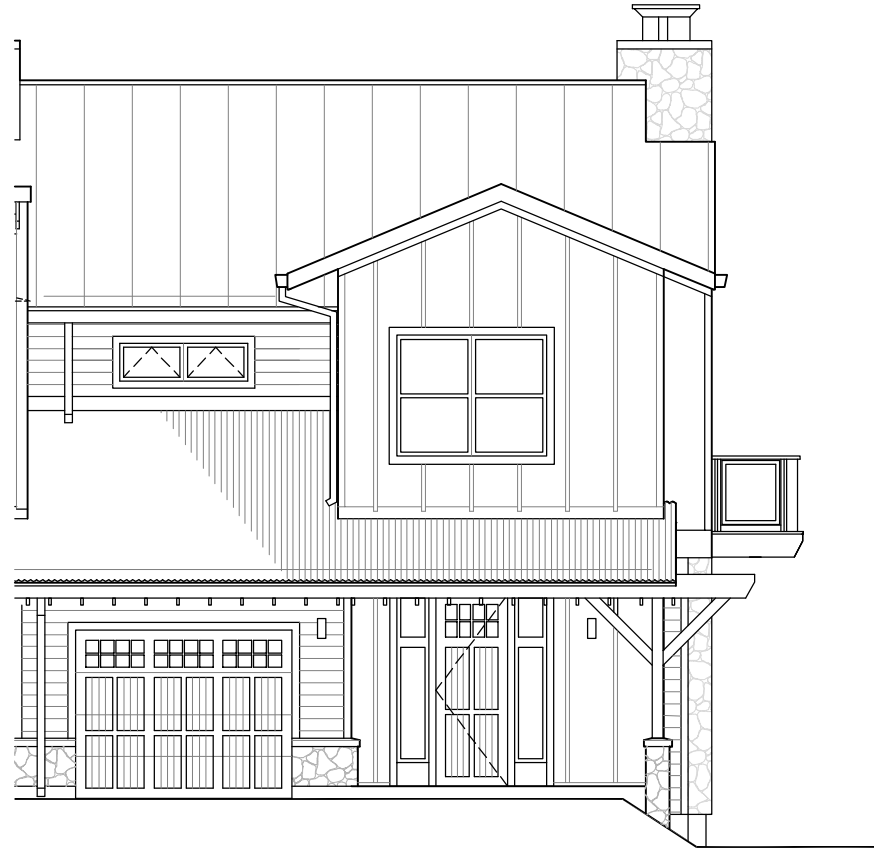
UNIT D
 EXTERIOR
 ELEVATIONS

D-3



A CREEK ELEVATION

1/8" = 1'-0"



B CLIFF ELEVATION

1/8" = 1'-0"



A END ELEVATION

1/8" = 1'-0"

PROJECT: **The Island at Rock Creek**

LOCATION: **Phase 1 - Building 3
 Kainu Avenue, Red Lodge, Montana**

PREPARED FOR: **Kiely Construction**

DATE	REVISION
26JUN06	PDF BROCHURE

DRAWN BY: _____
 CHECKED BY: _____
 JC
 PROJECT NO. _____
 0427

UNIT D
 EXTERIOR
 ELEVATIONS