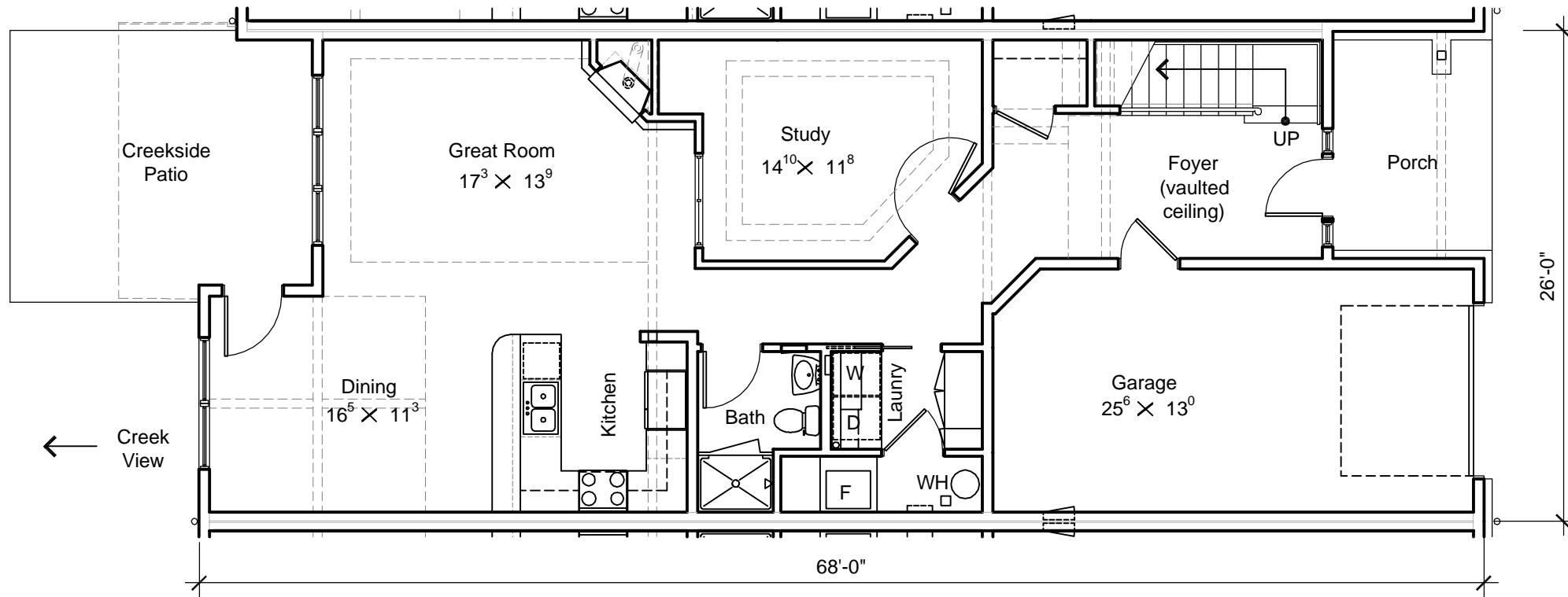


DATE	REVISION
26JUN06	PDF BROCHURE

DRAWN BY: _____
 CHECKED BY: WJH
 PROJECT NO.: JC
 0427

**UNIT C
 SECOND FLOOR
 PLAN**

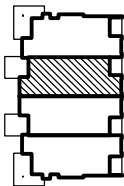
C-1



A UNIT C: GROUND FLOOR

1/8" = 1'-0"

KEY PLAN



DECK/PORCH AREA:

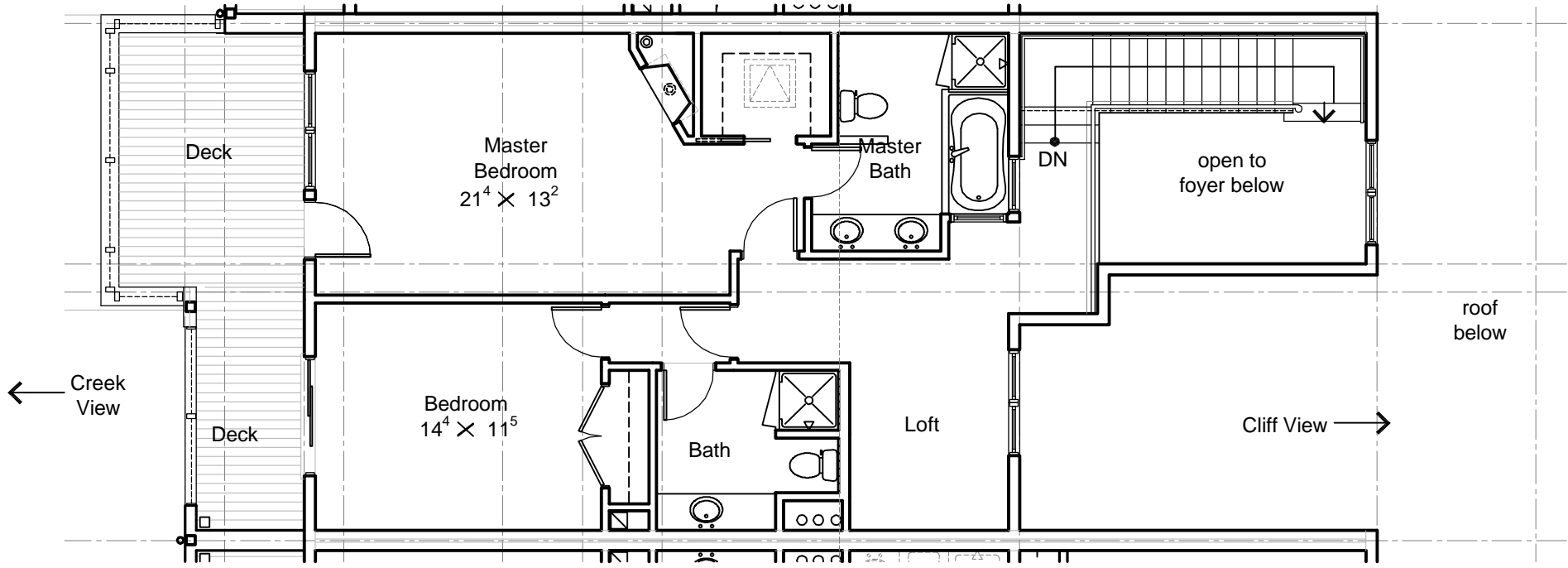
UNIT C	SF
Ground Floor	315
Second Floor	219
Total:	534

UNIT DESCRIPTION:

BEDROOMS:	2
BATHS:	3 FULL
GARAGE:	1-CAR
CREEK-SIDE DECKS:	3
GAS FIREPLACES:	2

AREA:

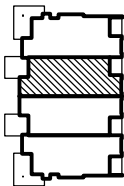
UNIT C	SF
Ground Floor	1,244
Second Floor	974
Total Living Area:	2,218
Garage	349
Gross Area:	2,567



A UNIT C: SECOND FLOOR

1/8" = 1'-0"

KEY PLAN



PROJECT:
 The Island at Rock Creek

LOCATION:
 Phase 1 - Building 3
 Kainu Avenue, Red Lodge, Montana

PREPARED FOR:
 Kieley Construction

DATE	REVISION
26JUN06	PDF BROCHURE

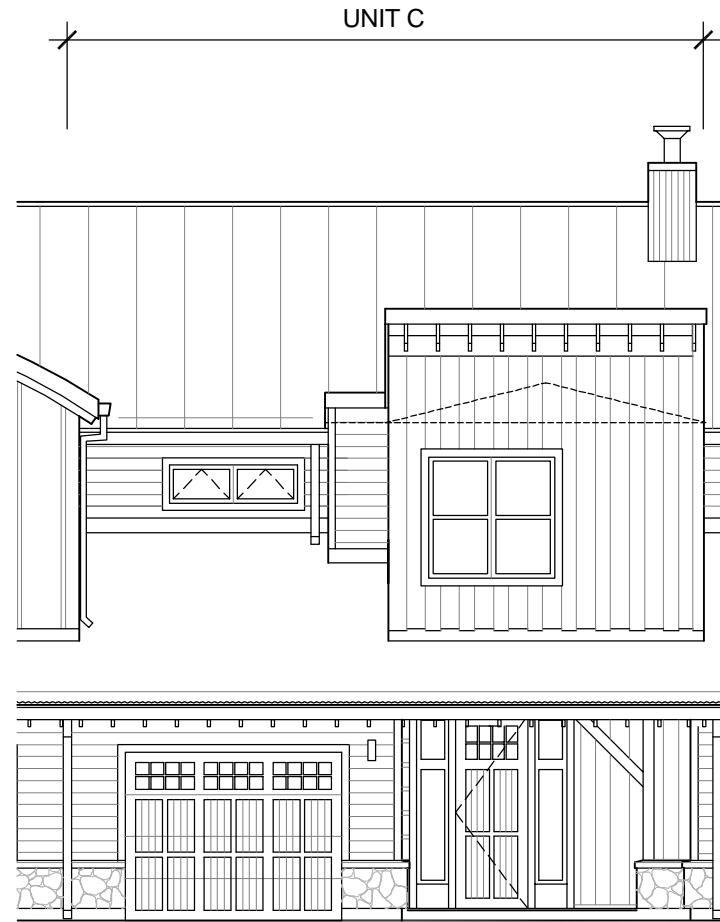
DRAWN BY: _____
CHECKED BY: _____
 JC
PROJECT NO.: _____
 0427

**UNIT C
 SECOND FLOOR
 PLAN**



A CREEK ELEVATION

1/8" = 1'-0"



B CLIFF ELEVATION

1/8" = 1'-0"

COPYRIGHT © 2006
 THESE DOCUMENTS, IN PART OR IN WHOLE, AND
 THE DESIGN THEY REPRESENT, ARE THE SOLE
 PROPERTY OF COLLABORATIVE DESIGN
 ARCHITECTS. THESE DOCUMENTS ARE INTENDED
 FOR THE PROJECT ON THE SITE INDICATED. ANY
 USE, REPRODUCTION, MODIFICATION OR
 ADAPTATION WITHOUT THE EXPRESS WRITTEN
 CONSENT OF COLLABORATIVE DESIGN
 ARCHITECTS IS STRICTLY PROHIBITED.

**COLLABORATIVE
 DESIGN
 ARCHITECTS** INC.

2280 GRANT ROAD • SUITE C • PO BOX 80467 • BILLINGS, MT. 59108-0467
 (406) 248-3443 • FAX (406) 248-3765 • COLLABORATIVE @USADIG.COM

PROJECT: **The Island at Rock Creek**

LOCATION: **Phase 1 - Building 3
 Kainu Avenue, Red Lodge, Montana**

PREPARED FOR: **Kiely Construction**

DATE	REVISION
26JUN06	PDF BROCHURE

DRAWN BY: _____
 CHECKED BY: **WJH**
JC
 PROJECT NO. **0427**

**UNIT C
 EXTERIOR
 ELEVATIONS**

C-3