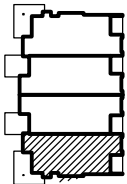


A UNIT A: GROUND FLOOR

1/8" = 1'-0"

KEY PLAN:



DECK/PORCH AREA:

UNIT A	SF
Ground Floor	417
Second Floor	200
Total:	630

UNIT DESCRIPTION:

BEDROOMS:	3
BATHS:	3 FULL
GARAGE:	1-CAR
CREEK-SIDE DECKS:	3
GAS FIREPLACES:	2

AREA:

UNIT A	SF
Ground Floor	1,253
Second Floor	955
Total Living Area:	2,208
Garage:	351
Gross Area:	2,559

PROJECT:
 The Island at Rock Creek

LOCATION:
 Phase 1 - Building 3
 Kainu Avenue, Red Lodge, Montana

PREPARED FOR:
 Kieley Construction

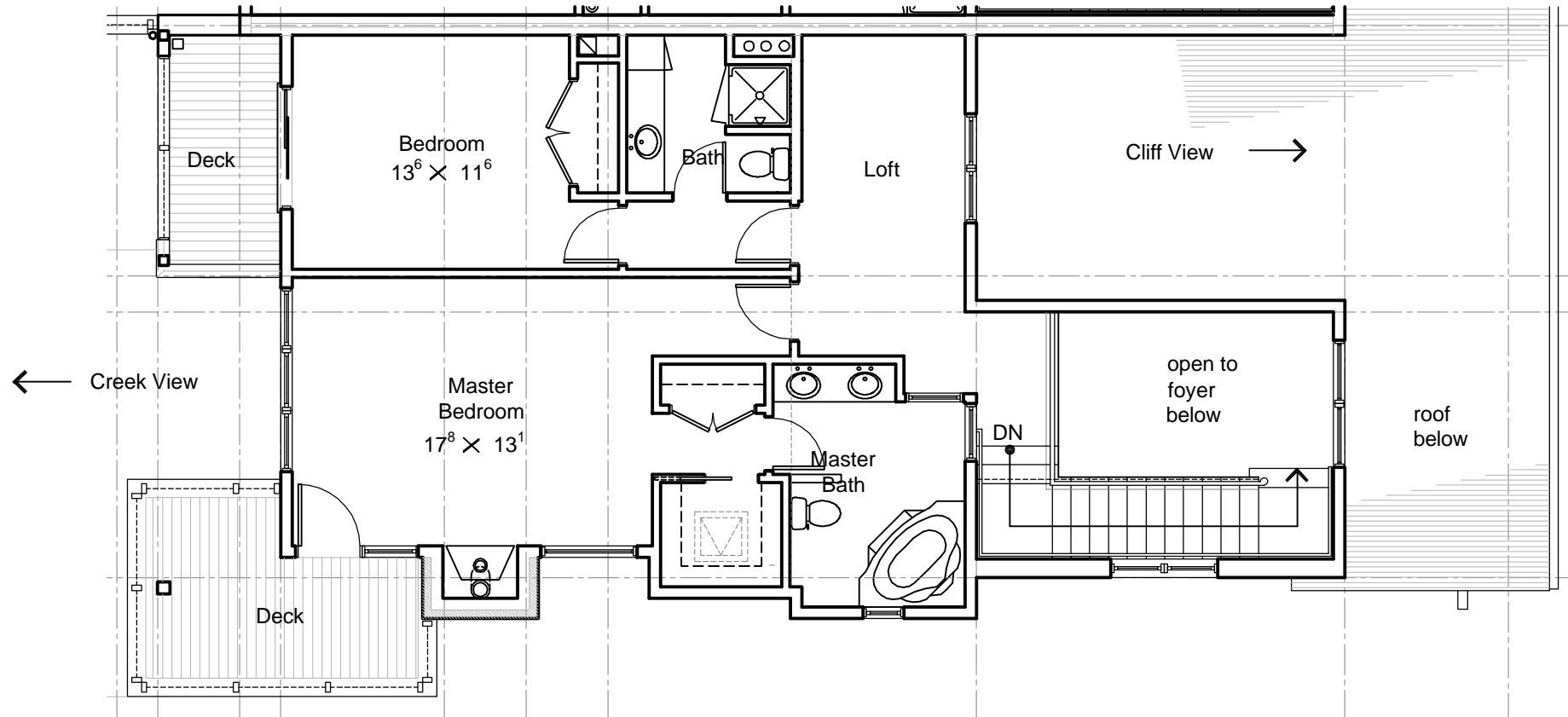
DATE

REVISION

DATE	REVISION
26JUN06	PDF BROCHURE

DRAWN BY:	
WJH	
CHECKED BY:	
JC	
PROJECT NO.	
0427	

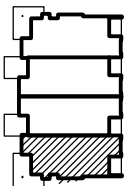
**UNIT A
 GROUND FLOOR
 PLAN**



A UNIT A: SECOND FLOOR

1/8" = 1'-0"

KEY PLAN



**COLLABORATIVE
 DESIGN
 ARCHITECTS**

2280 GRANT ROAD SUITE C • PO BOX 80467 • BILLINGS, MT. 59108-0467
 (406) 248-3443 • FAX (406) 248-3765 • COLLABORATIVE @USADIG.COM

PROJECT:
 The Island at Rock Creek

LOCATION:
 Phase 1 - Building 3
 Kainu Avenue, Red Lodge, Montana

PREPARED FOR:
 Kieley Construction

DATE	REVISION
26JUN06	PDF BROCHURE

DRAWN BY: _____
WJH
CHECKED BY: _____
JC
PROJECT NO.: _____
0427

**UNIT A
 GROUND FLOOR
 PLAN**



A UNIT A: ELEVATIONS

1/8" = 1'-0"

COPYRIGHT © 2006
 THESE DOCUMENTS, IN PART OR IN WHOLE, AND THE DESIGN THEY REPRESENT, ARE THE SOLE PROPERTY OF COLLABORATIVE DESIGN ARCHITECTS. THESE DOCUMENTS ARE INTENDED FOR THE PROJECT ON THE SITE INDICATED. ANY USE, REPRODUCTION, MODIFICATION OR ADAPTATION WITHOUT THE EXPRESS WRITTEN CONSENT OF COLLABORATIVE DESIGN ARCHITECTS IS STRICTLY PROHIBITED.

COLLABORATIVE
 DESIGN
 ARCHITECTS

2280 GRANT ROAD • SUITE C • PO BOX 80467 • BILLINGS, MT. 59108-0467
 (406) 248-3443 • FAX (406) 248-3765 • COLLABORATIVE @USADIG.COM

PROJECT: The Island at Rock Creek
 LOCATION: Phase 1 - Building 3
 Kainu Avenue, Red Lodge, Montana
 PREPARED FOR: Kieley Construction

DATE	REVISION
26JUN06	PDF BROCHURE

DRAWN BY: _____
 CHECKED BY: _____
 JC
 PROJECT NO. _____
 0427

UNIT A
 EXTERIOR
 ELEVATIONS

PROJECT: **The Island at Rock Creek**
 LOCATION: **Phase 1 - Building 3**
Kainu Avenue, Red Lodge, Montana
 PREPARED FOR: **Kiely Construction**

DATE	REVISION
26JUN06	PDF BROCHURE

DRAWN BY: _____
 CHECKED BY: **WJH**
JC
 PROJECT NO. **0427**

**UNIT A
 EXTERIOR
 ELEVATIONS**



A CREEK ELEVATION

1/8" = 1'-0"



B CLIFF ELEVATION

1/8" = 1'-0"