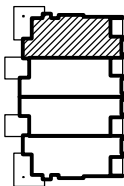


A UNIT D: GROUND FLOOR

1/8" = 1'-0"

KEY PLAN:



DECK/PORCH AREA:

UNIT D	SF
Ground Floor	417
Second Floor	200
Total:	617

UNIT DESCRIPTION:

BEDROOMS:	3
BATHS:	3 FULL
GARAGE:	1-CAR
CREEK-SIDE DECKS:	3
GAS FIREPLACES:	2

AREA:

UNIT D	SF
Ground Floor	1,253
Second Floor	961
Total Living Area:	2,208
Garage	351
Gross Area:	2,565

PROJECT: Island at Rock Creek

LOCATION: Phase 1 - Building 2

Kainu Avenue, Red Lodge, Montana

PREPARED FOR: Kieley Construction

DATE: 26 JUN 06

REVISION: PDF BROCHURE

DRAWN BY: _____

WJH

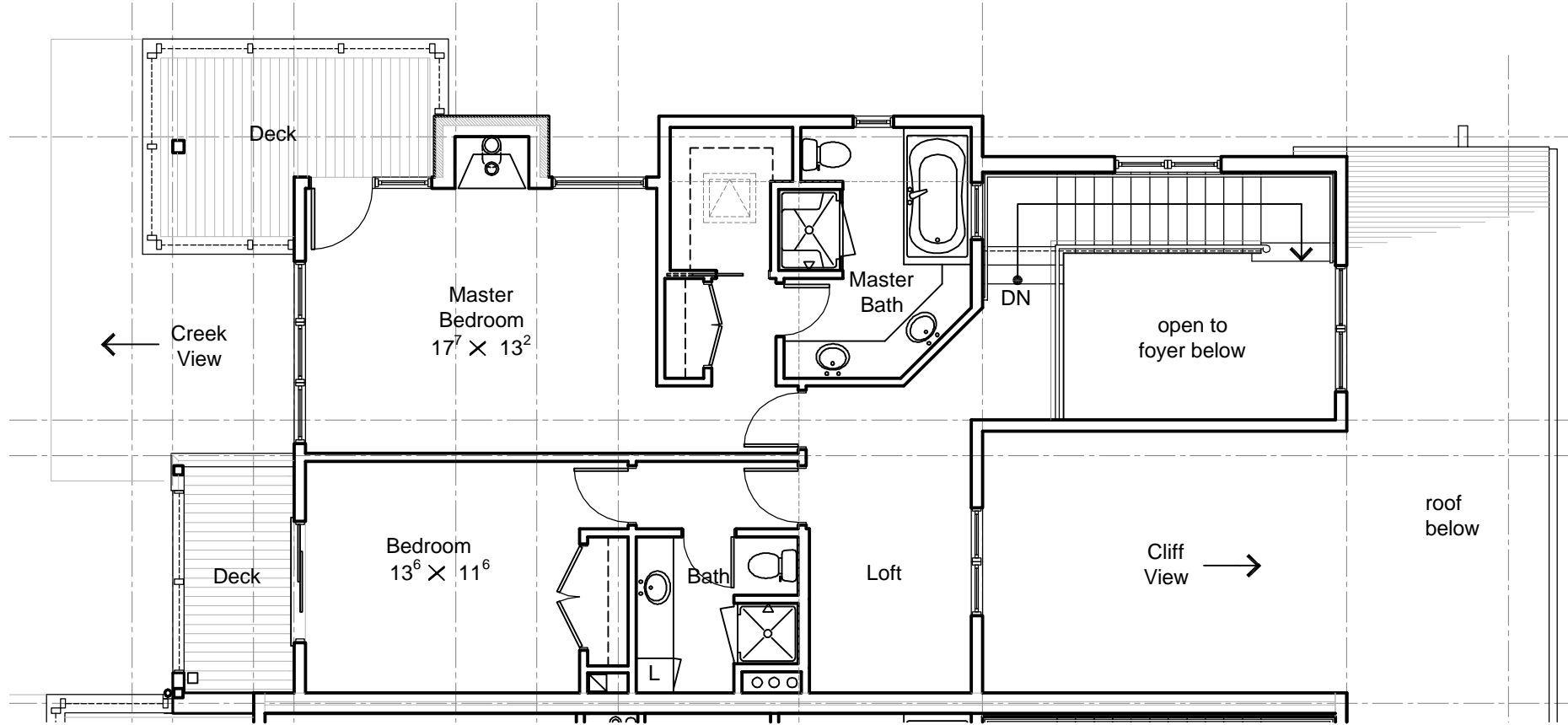
CHECKED BY: _____

JC

PROJECT NO.: _____

0427

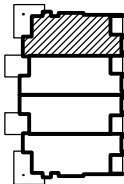
Bldg 2 UNIT D
 GROUND FLOOR
 PLAN



A UNIT D: SECOND FLOOR

1/8" = 1'-0"

KEY PLAN:



PROJECT:
 Island at Rock Creek

LOCATION:
 Phase 1 - Building 2
 Kainu Avenue, Red Lodge, Montana

PREPARED FOR:
 Ktely Construction

DATE	REVISION
26JUN06	PDF BROCHURE

DRAWN BY: _____
CHECKED BY: _____
 WJH
 JC
PROJECT NO.:
 0427

Bldg 2 UNIT D
 SECOND FLOOR
 PLAN

PROJECT: **Island at Rock Creek**

LOCATION: **Phase 1 - Building 2**

Kainu Avenue, Red Lodge, Montana

PREPARED FOR: **Kiely Construction**

DATE	REVISION
26JUN06	PDF BROCHURE

DRAWN BY: _____
 CHECKED BY: _____
 JC
 PROJECT NO. _____
 0427

Bldg 2 UNIT D
 EXTERIOR
 ELEVATIONS



A CREEK ELEVATION

1/8" = 1'-0"



B CLIFF ELEVATION

1/8" = 1'-0"



A END ELEVATION

1/8" = 1'-0"

PROJECT: **Island at Rock Creek**

LOCATION: **Phase 1 - Building 2
 Kainu Avenue, Red Lodge, Montana**

PREPARED FOR: **Kiely Construction**

DATE	REVISION
26JUN06	PDF BROCHURE

DRAWN BY: _____
 CHECKED BY: **WJH**
JC
 PROJECT NO. **0427**

Bldg 2 UNIT D
 EXTERIOR
 ELEVATIONS