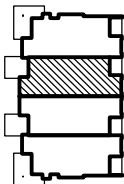


A UNIT C: GROUND FLOOR

1/8" = 1'-0"

KEY PLAN



DECK/PORCH AREA:

UNIT C	SF
Ground Floor	315
Second Floor	219
<b>Total:</b>	<b>534</b>

UNIT DESCRIPTION:

BEDROOMS:	3 FULL
BATHS:	3
GARAGE:	1-CAR
CREEK-SIDE DECKS:	3
GAS FIREPLACES:	2

AREA:

UNIT C	SF
Ground Floor	1,244
Second Floor	1,210
<b>Total Living Area:</b>	<b>2,454</b>
<u>Garage</u>	349
<b>Gross Area:</b>	<b>2,803</b>

PROJECT:

Island at Rock Creek

LOCATION:

Phase 1 - Building 2  
 Kainu Avenue, Red Lodge, Montana

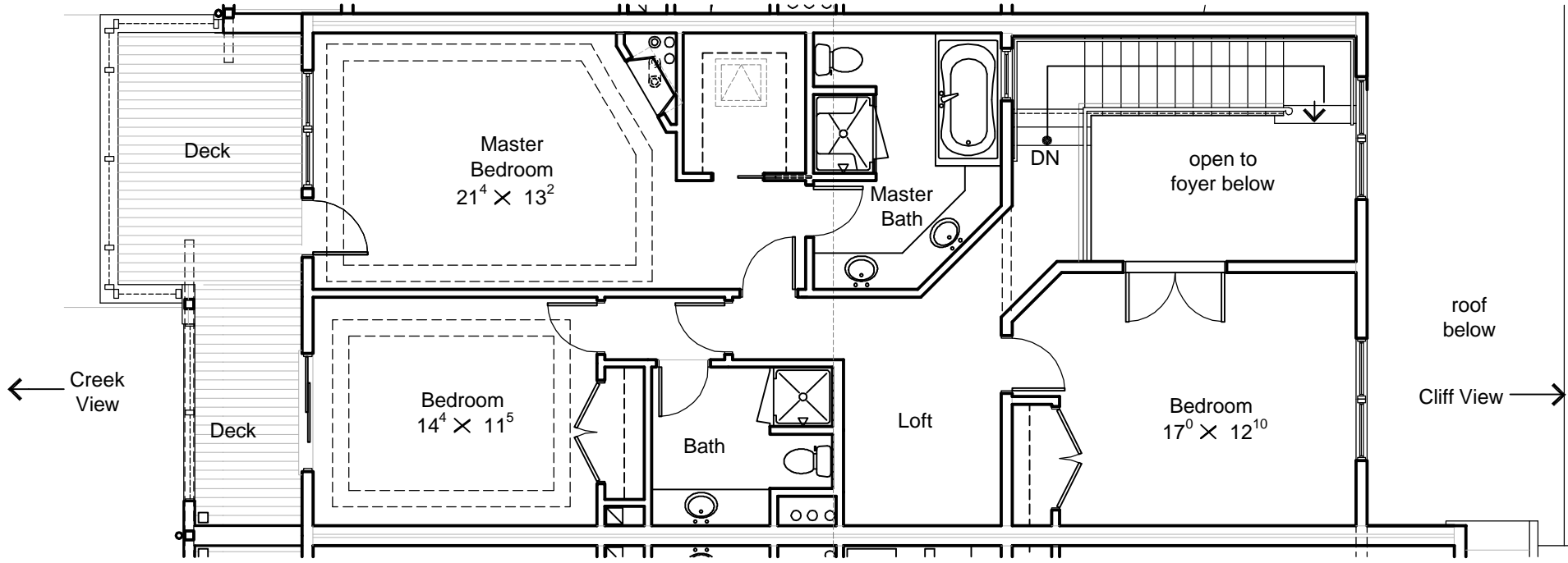
PREPARED FOR:

Kiely Construction

DATE	REVISION
26JUN06	PDF BROCHURE

<u>DRAWN BY:</u>	
<u>WJH</u>	
<u>CHECKED BY:</u>	
<u>JC</u>	
<u>PROJECT NO.:</u>	
<u>0427</u>	

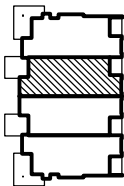
Bldg 2 UNIT C  
 SECOND FLOOR  
 PLAN



**A UNIT C: SECOND FLOOR**

1/8" = 1'-0"

**KEY PLAN**



**PROJECT:**  
 Island at Rock Creek

**LOCATION:**  
 Phase 1 - Building 2  
 Kainu Avenue, Red Lodge, Montana

**PREPARED FOR:**  
 Kieley Construction

DATE	REVISION
26JUN06	PDF BROCHURE

**DRAWN BY:** \_\_\_\_\_  
**WJH**  
**CHECKED BY:** \_\_\_\_\_  
**JC**  
**PROJECT NO.:** \_\_\_\_\_  
**0427**

Bldg 2 UNIT C  
 SECOND FLOOR  
 PLAN



**A** CREEK ELEVATION

1/8" = 1'-0"



**B** CLIFF ELEVATION

1/8" = 1'-0"

COPYRIGHT © 2006  
 THESE DOCUMENTS, IN PART OR IN WHOLE, AND  
 THE DESIGN THEY REPRESENT, ARE THE SOLE  
 PROPERTY OF COLLABORATIVE DESIGN  
 ARCHITECTS. THESE DOCUMENTS ARE INTENDED  
 FOR THE PROJECT ON THE SITE INDICATED. ANY  
 USE, REPRODUCTION, MODIFICATION OR  
 ADAPTATION WITHOUT THE EXPRESS WRITTEN  
 CONSENT OF COLLABORATIVE DESIGN  
 ARCHITECTS IS STRICTLY PROHIBITED.

**COLLABORATIVE  
 DESIGN  
 ARCHITECTS** INC.

2280 GRANT ROAD • SUITE C • PO BOX 80467 • BILLINGS, MT. 59108-0467  
 (406) 248-3443 • FAX (406) 248-3765 • COLLABORATIVE @USADIG.COM

PROJECT: **Island at Rock Creek**

LOCATION: **Phase 1 - Building 2  
 Kainu Avenue, Red Lodge, Montana**

PREPARED FOR: **Kiely Construction**

DATE	REVISION
26JUN06	PDF BROCHURE

DRAWN BY: \_\_\_\_\_  
 CHECKED BY: **WJH**  
**JC**  
 PROJECT NO. **0427**

Bldg 2 UNIT C  
 EXTERIOR  
 ELEVATIONS